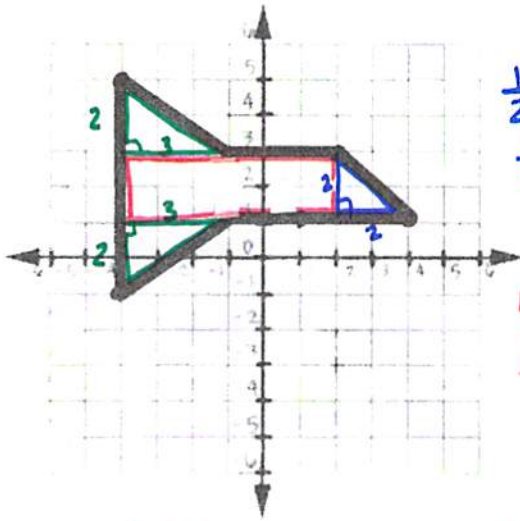


PLACEMAT ACTIVITY

Winston
3/2/2018

Directions: Find the perimeter and area of each irregular polygon.

1)



$$\frac{1}{2}bh$$

$$\frac{1}{2}(2)(2) = \boxed{2}$$

$$b \cdot h$$

$$6 \cdot 2 = \boxed{12}$$

$$\frac{1}{2}bh$$

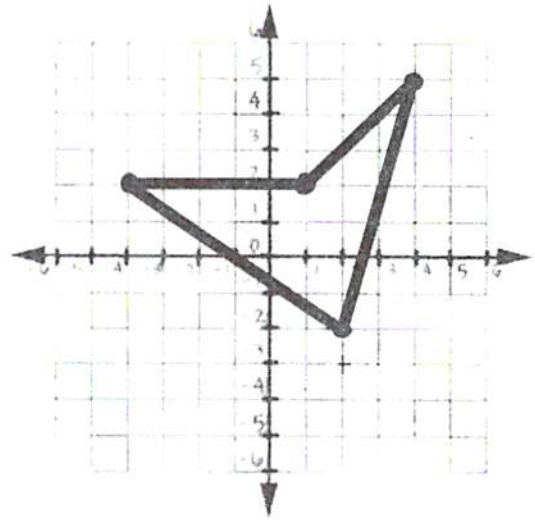
$$\frac{1}{2}(2)(3) = \boxed{3}$$

$$\frac{1}{2}bh$$

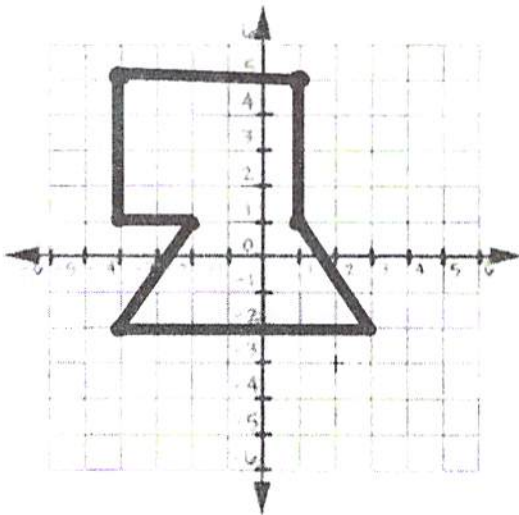
$$\frac{1}{2}(2)(3) = \boxed{3}$$

$$3 + 3 + 2 + 12 = \boxed{20 \text{ units}^2}$$

2)



3)



4)

